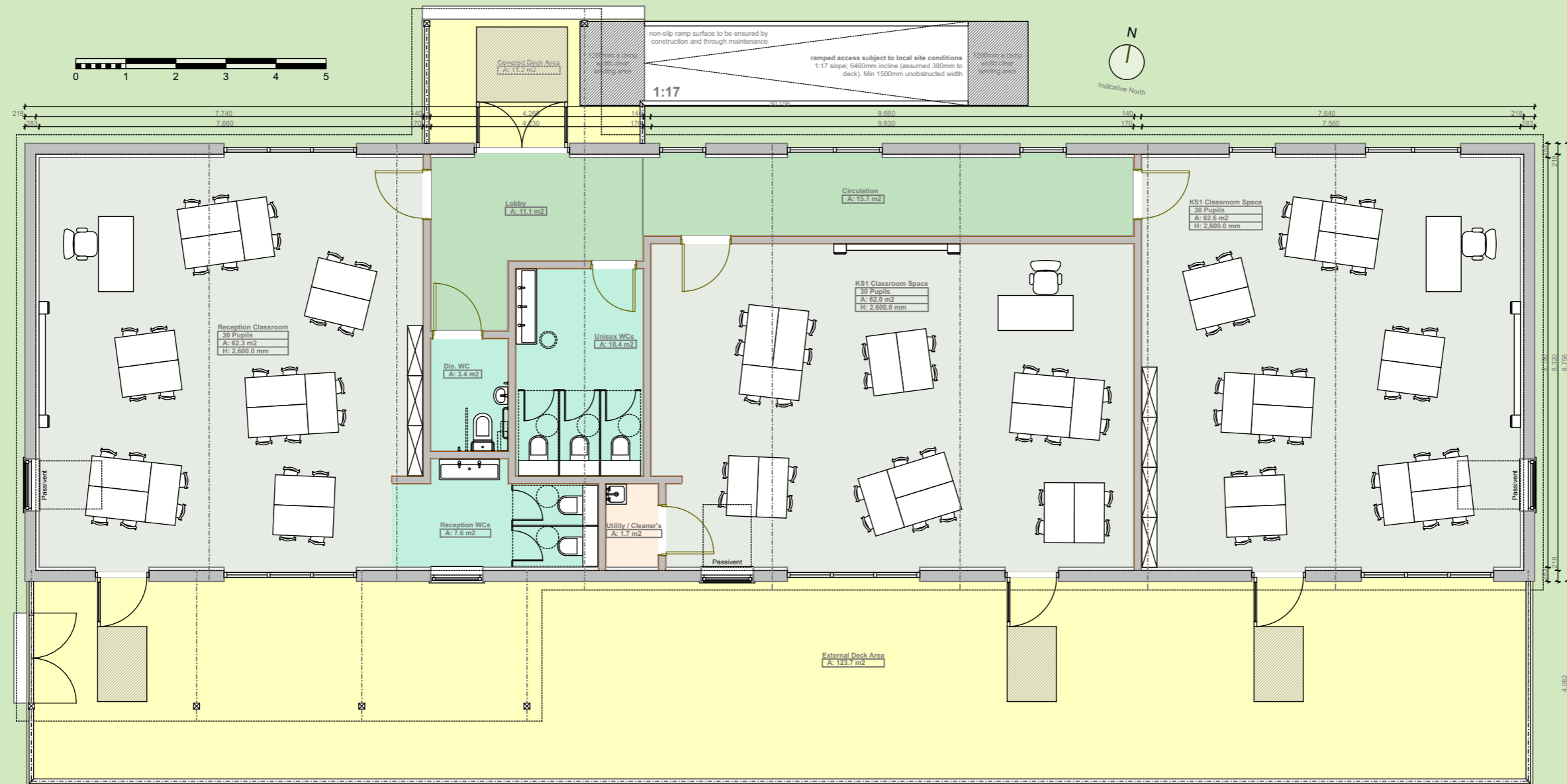


Site conditions are indicative only.
Indicative plan layout. Furniture shown for purposes of illustration.
Internal ceiling height: 2600mm
Total Floor Area (including linings and partitions): 247.3sqm
Classroom designed for: 48 pupils
KS: EYFS / 1.
Vertical larch cladding.
Aluminium window frames.
Sun pipes.



Plan : 1:100at A3

Rev.D: 15.07.20: G.C. Final updates.
Rev.C: 14.07.20: M.G. Cladding confirmed as larch
Rev.B: 03.07.20: G.C. Scheme modified based on client's comments
Rev.A: 14.04.20: G.C. Scheme modified based on client's comments